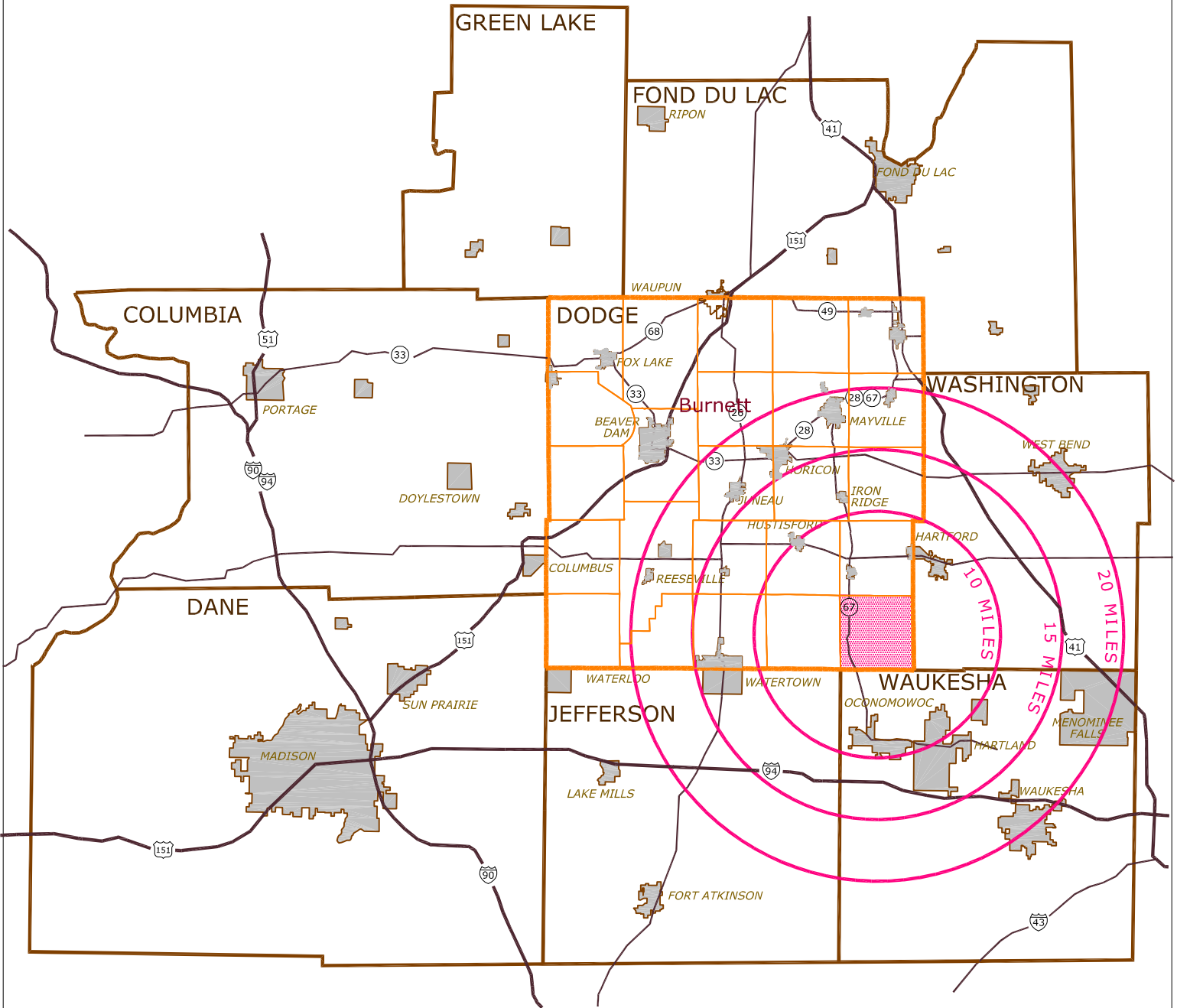
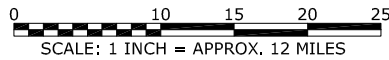
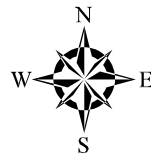


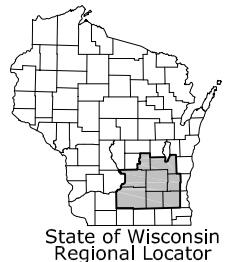
Map 1-1 Regional Setting Town of Ashippun, Dodge County, Wisconsin



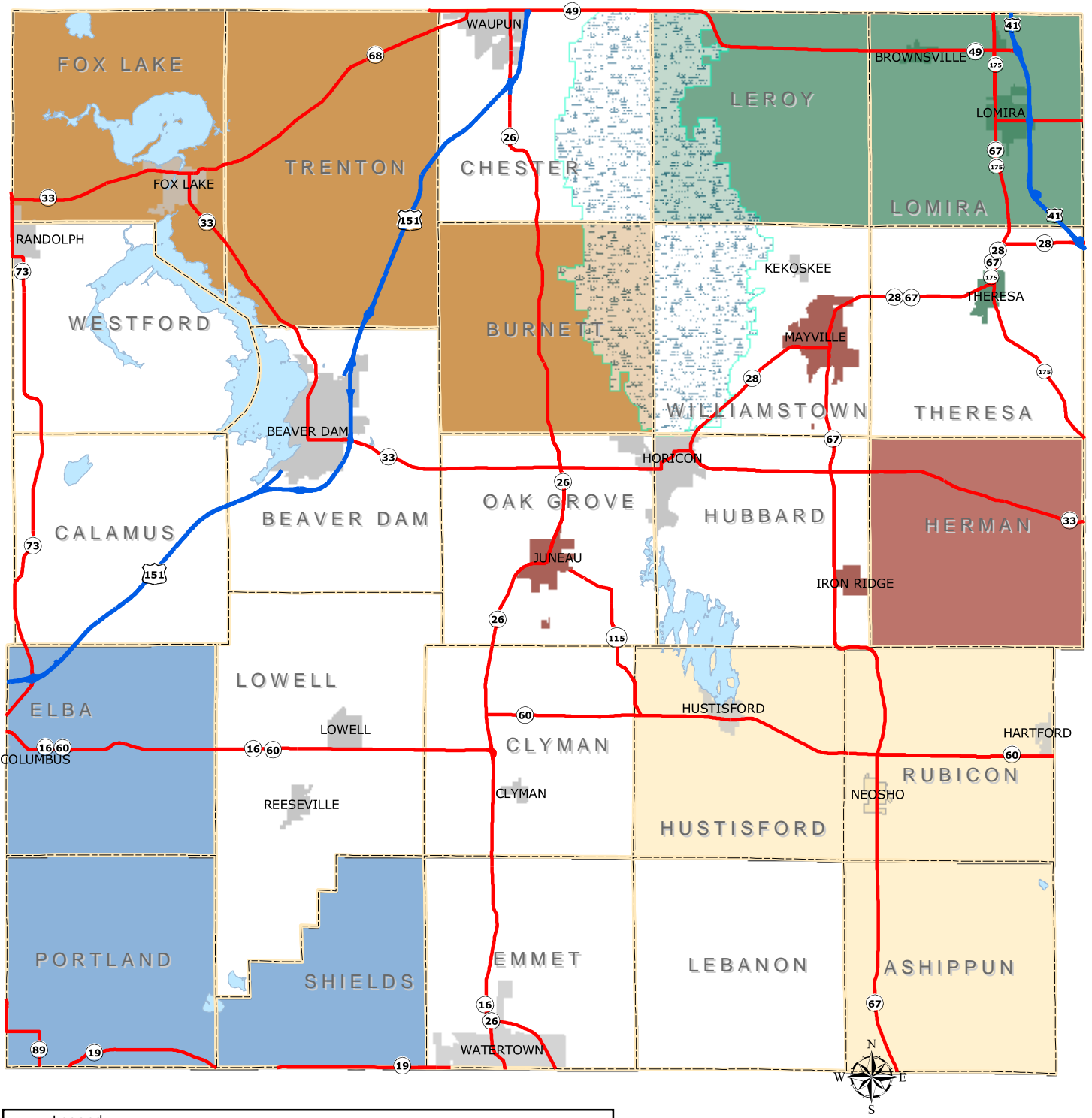
	U.S. Highway		Dodge County Town Boundary
	State Highway		City or Village
	County Boundary		Municipality Site
	Dodge County Boundary		Site Radius Boundary



Dodge County
Planning and Development
Department



Map 1-2, Multi-jurisdictional Plan Groupings Dodge County, Wisconsin



Legend	
 Towns of Leroy, Lomira, and Villages of Lomira, Brownsville, and Theresa	 Town Boundaries
 Towns of Trenton, Fox Lake, and Burnett	 Municipalities (Not Participating)
 Towns of Rubicon, Ashippun, and Hustisford and Village of Neosho	 U.S. Highway
 Towns of Elba, Portland, and Shields	 State Highway
 Town of Herman, Village of Iron Ridge, and Cities of Mayville and Juneau	 Horicon Marsh
 Towns Not Participating	 Lake

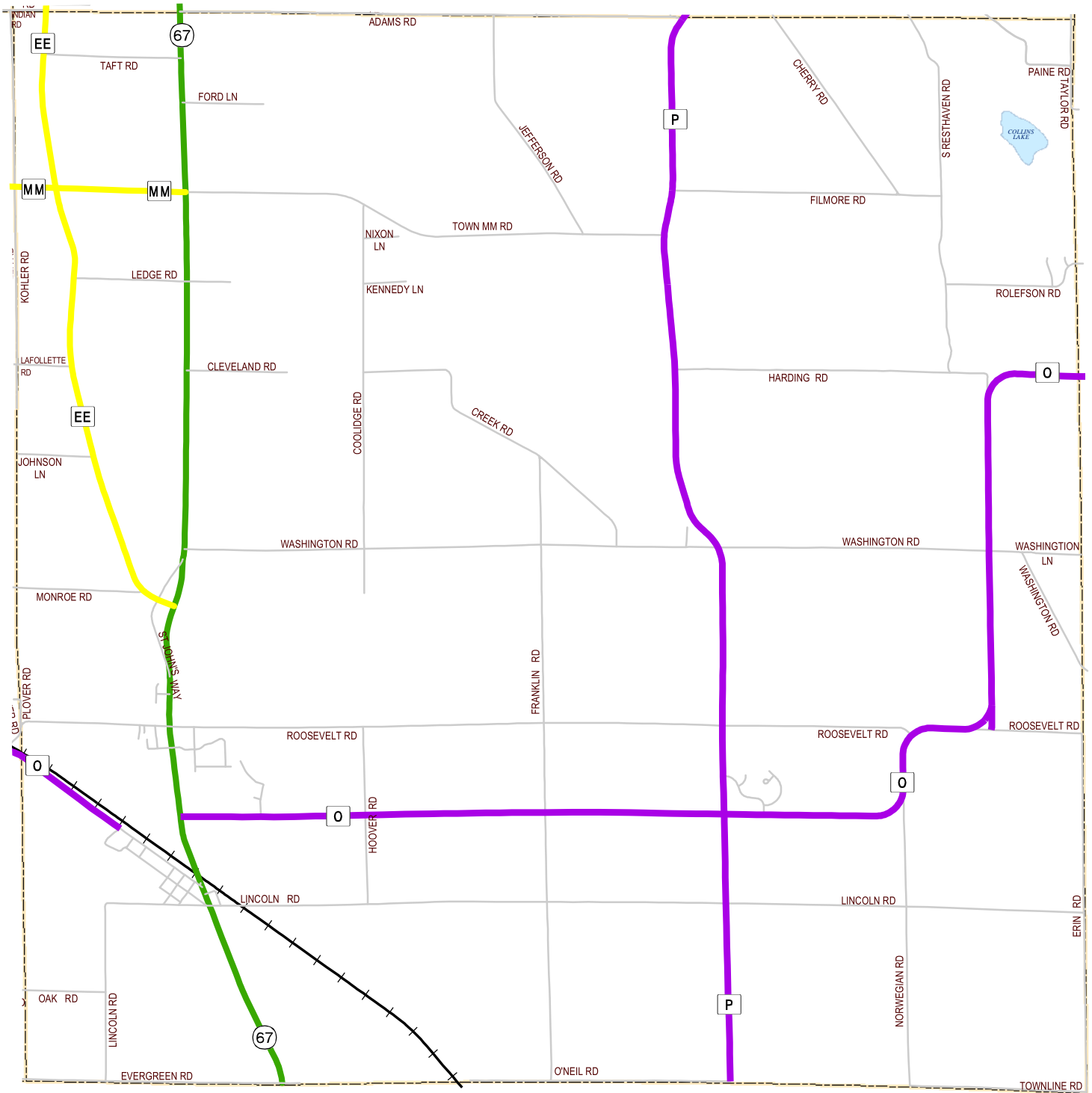
Dodge County
Planning and Development
Department



Source: Dodge County Planning and Development Department, April 2004

0 2.5 5 10 Miles

Map 3-1, Functional Classification of Highways & Location of Railroads and Airports Town of Ashippun, Dodge County, Wisconsin



Legend

Functional Roadway Classification	Railroads
Principal Arterials	Airport
Minor Arterials	Town Boundaries
Major Collectors	Municipalities
Minor Collectors	Lake
Local	

Dodge County Wisconsin

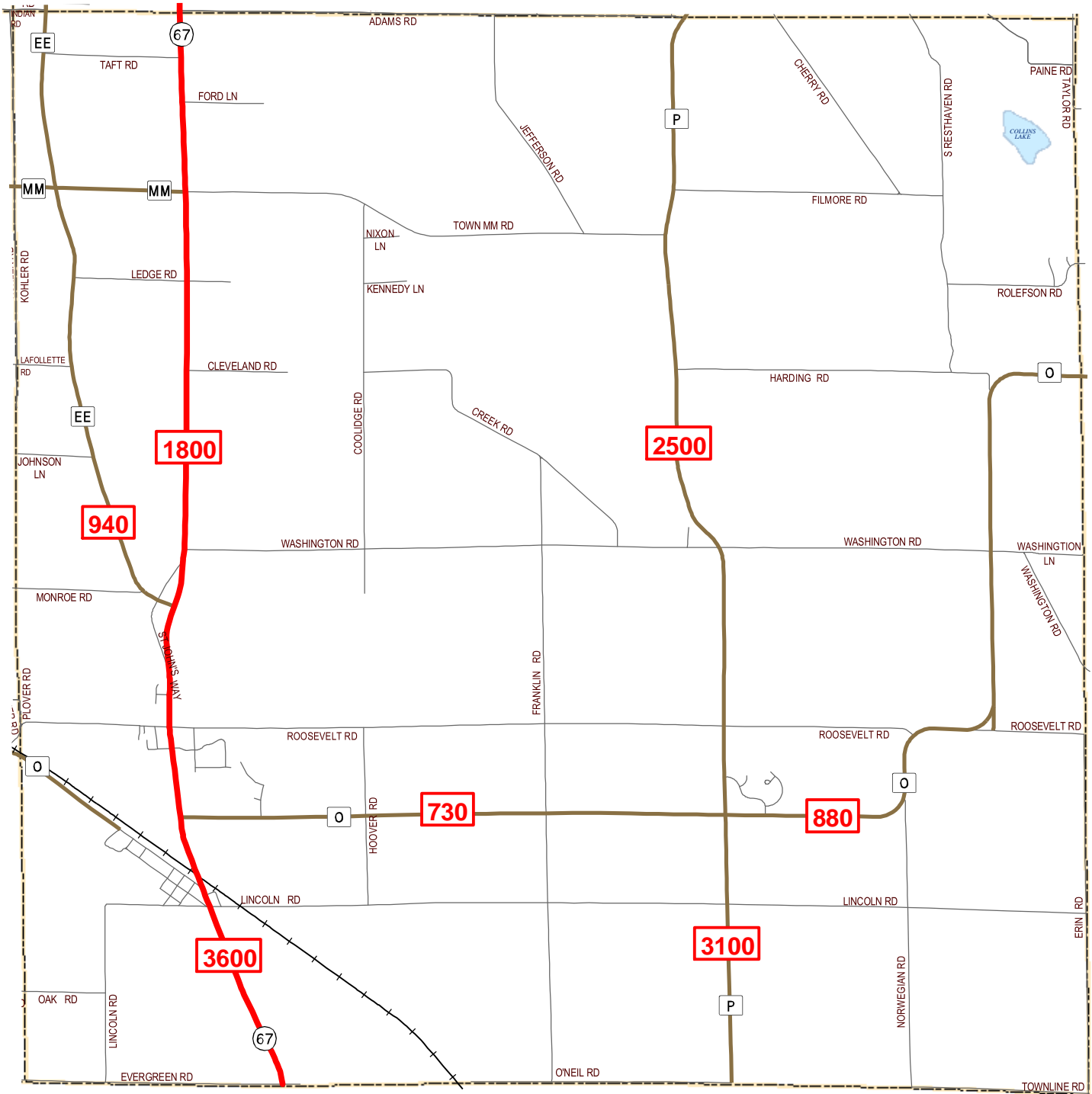
Dodge County Planning and Development Department

Town of Ashippun

Source: Dodge County Planning and Development Department, November 2004



Map 3-2, Average Daily Traffic Counts Town of Ashippun, Dodge County, Wisconsin



Legend

- U. S. Highway
- State Highway
- County Highway
- Town Road
- Railroad
- Town Boundary
- Average Daily Traffic Counts
- Waterbodies
- Municipalities

Source: Dodge County Planning and Development Department, November 2004

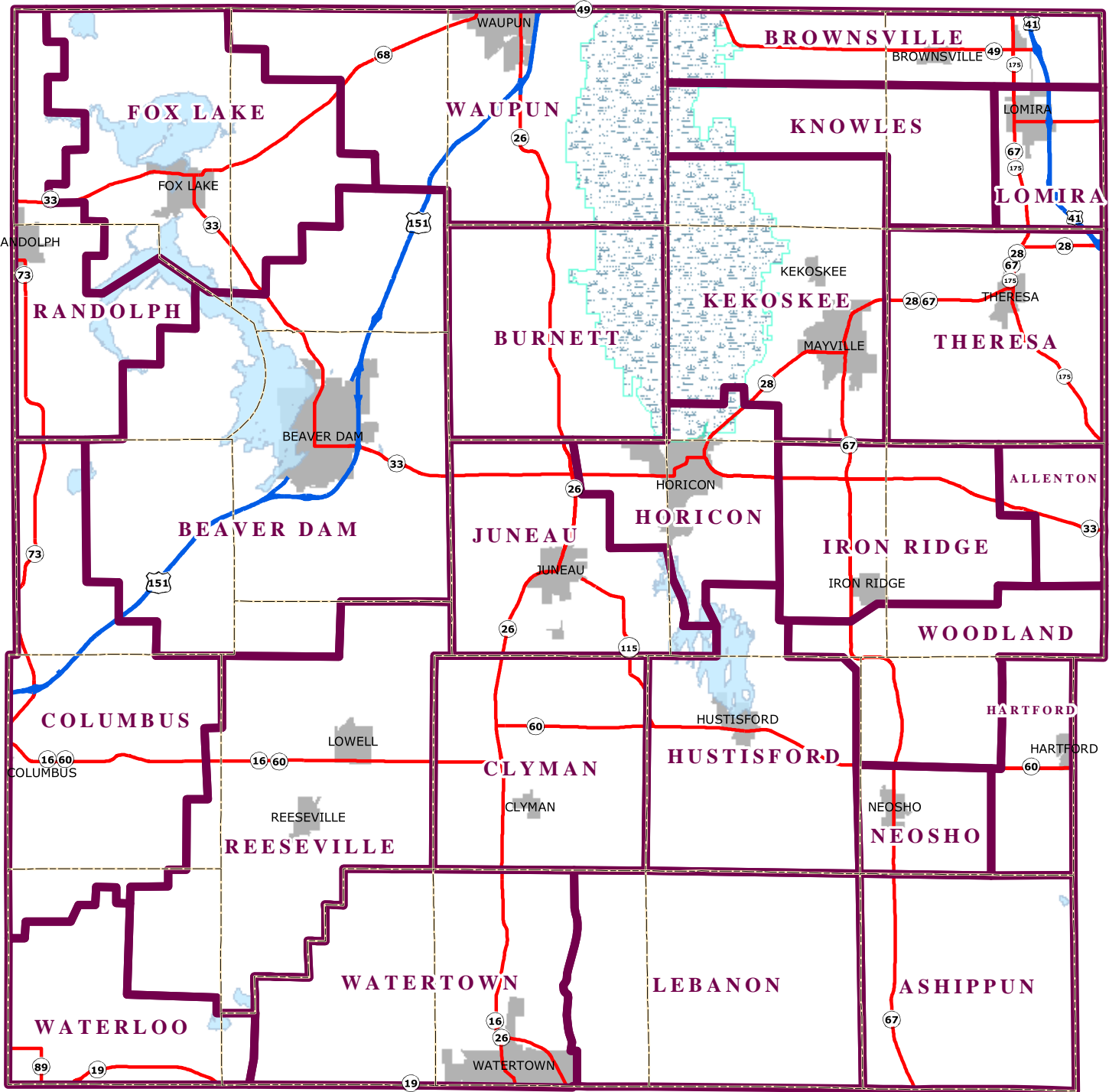
Dodge County
 Planning and Development
 Department

Dodge County Wisconsin

Town of Ashippun

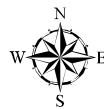


Map 4-1, Fire Emergency Service Areas Dodge County, Wisconsin



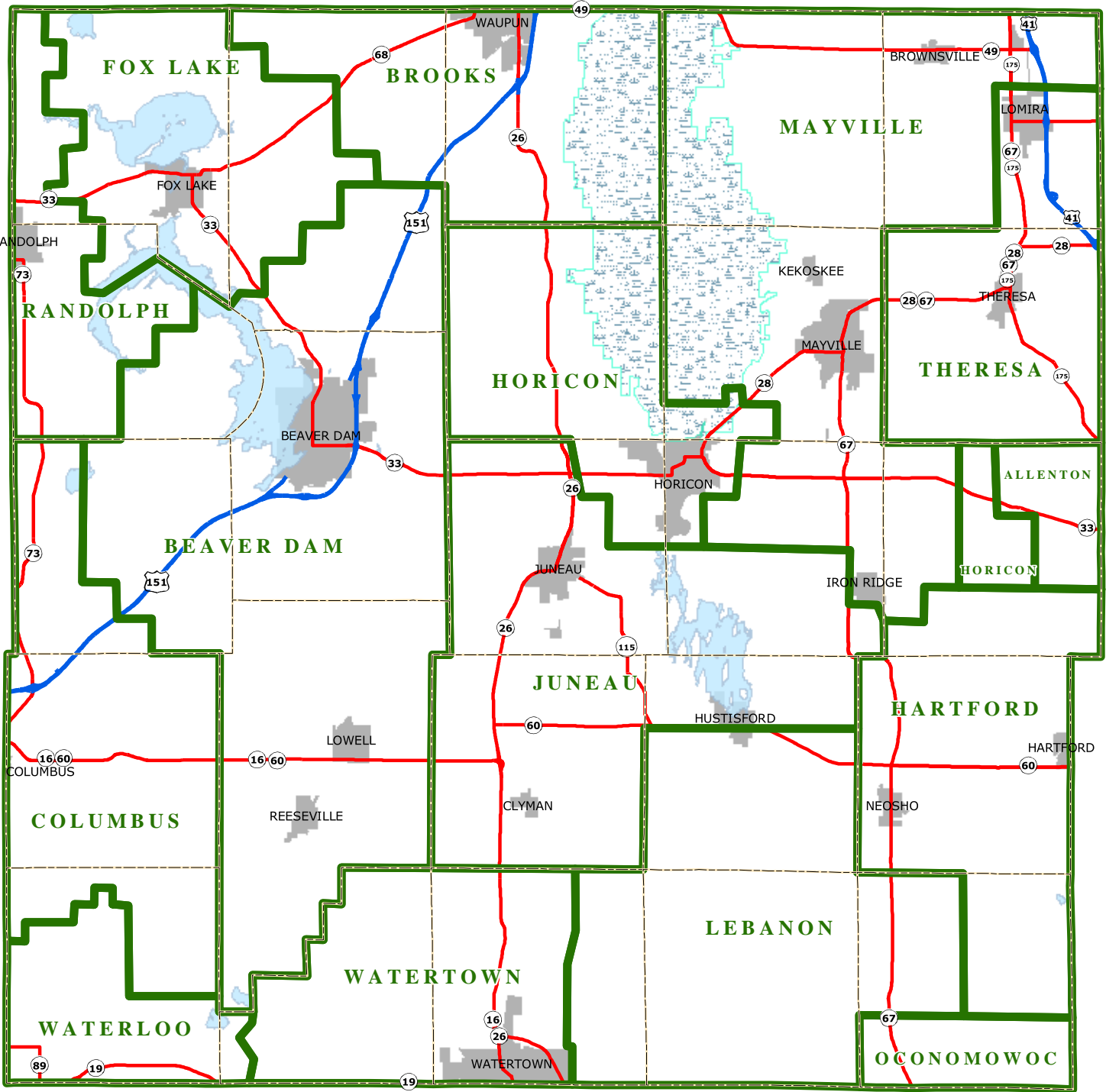
Legend

- U.S. Highway
- State Highway
- Town Boundaries
- Municipalities
- Fire Dispatch Regions
- Horicon Marsh
- Lake



Dodge County
Planning and Development
Department

Map 4-2, Emergency Medical Service Areas Dodge County, Wisconsin



Legend

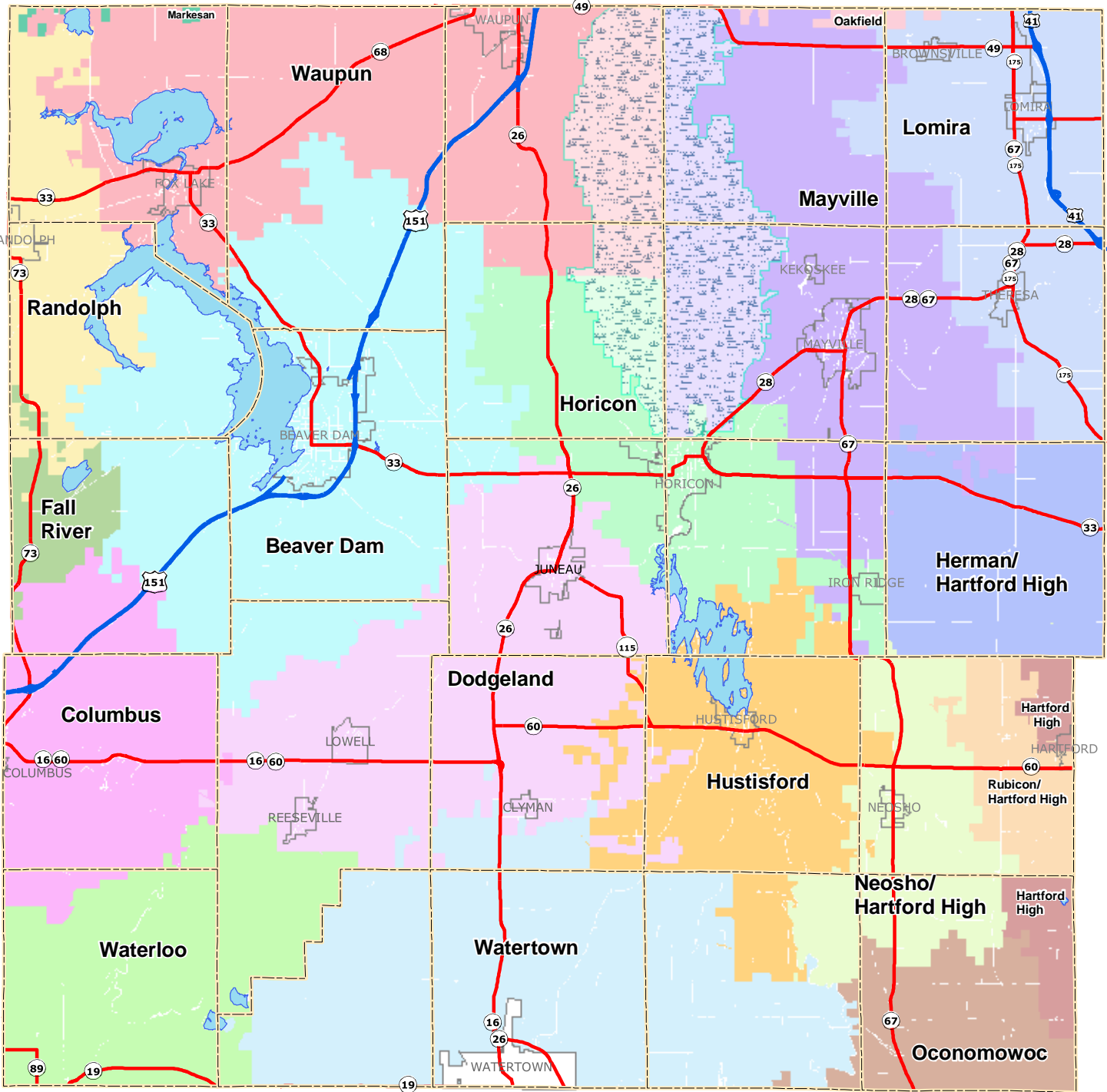
- U.S. Highway
- State Highway
- Town Boundaries
- Municipalities
- EMS Dispatch Regions
- Horicon Marsh
- Lake



Dodge County
Planning and Development
Department

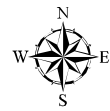


Map 4-3, School District Boundaries Dodge County, Wisconsin



Legend

U.S. Highway	School Districts	Markesan
State Highway	Beaver Dam	Mayville
Town Boundaries	Columbus	Neosho/Hartford High
Municipalities	Fall River	Oakfield
Horicon Marsh	Hartford High	Oconomowoc
Lake	Herman/Hartford High	Randolph
	Horicon	Waterloo/Hartford High
	Hustisford	Waterloo
	Dodgeland	Watertown
	Lomira	Waupun

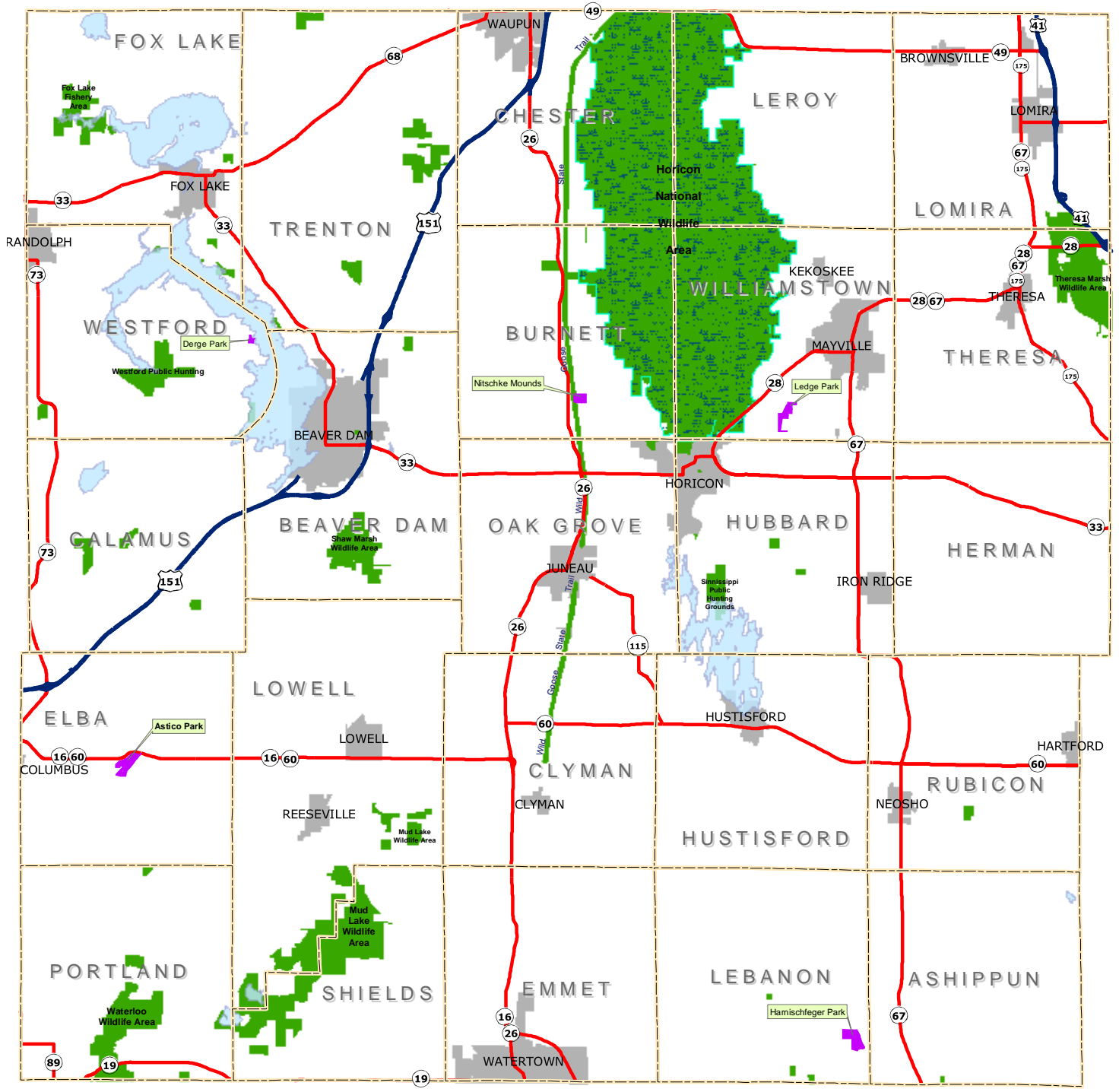


Dodge County
Planning and Development
Department

0 2.5 5 10 Miles

Source: Dodge County Land Information Department, April 2004

Map 4-4, County, State, & Federal Recreation Areas Dodge County, Wisconsin



Legend

U.S. Highway	County Recreation Areas
State Highway	Federal and State Recreation Areas
Town Boundaries	Horicon Marsh
Municipalities	Lake

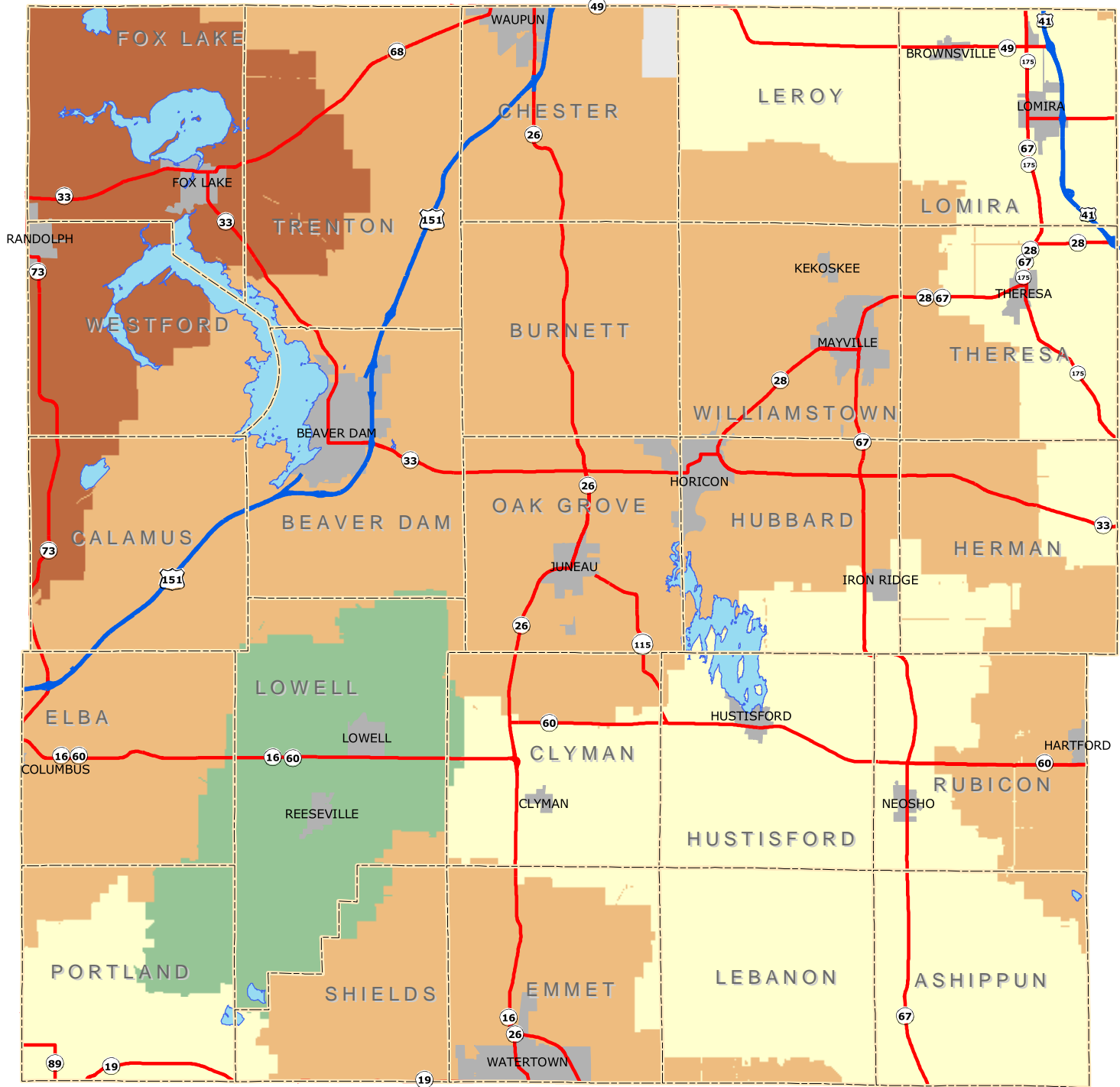


Dodge County
Planning and Development
Department

Source: Dodge County Planning and Development Department, April 2004



Map 4-5, Telephone Service Providers Dodge County, Wisconsin



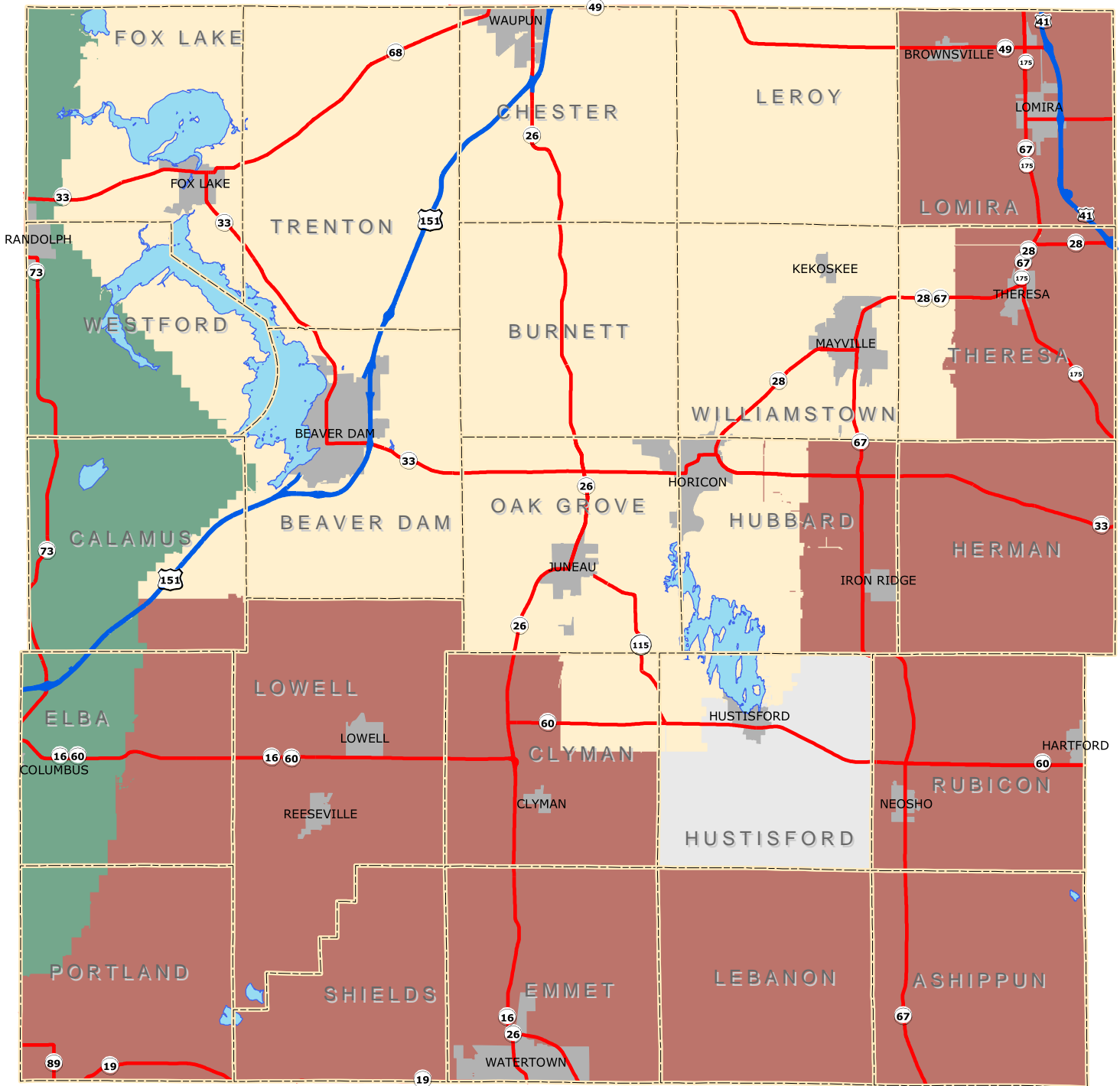
Legend

- U.S. Highway
- State Highway
- Town Boundaries
- Municipalities
- Century Tel, Inc.
- SBC WI
- Telephone and Data Systems, Inc.
- Unassigned Territory
- Verizon North, Inc.
- Lake



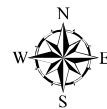
Dodge County
Planning and Development
Department

Map 4-6, Electric Utilities and Cooperatives Dodge County, Wisconsin

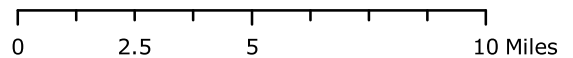


Legend

U.S. Highway	Columbus Rural Electric Cooperative
State Highway	Municipalities (serving beyond corporate limits)
Town Boundaries	Wisconsin Electric Power Co. (private)
Municipalities	Alliant Energy
Lake	

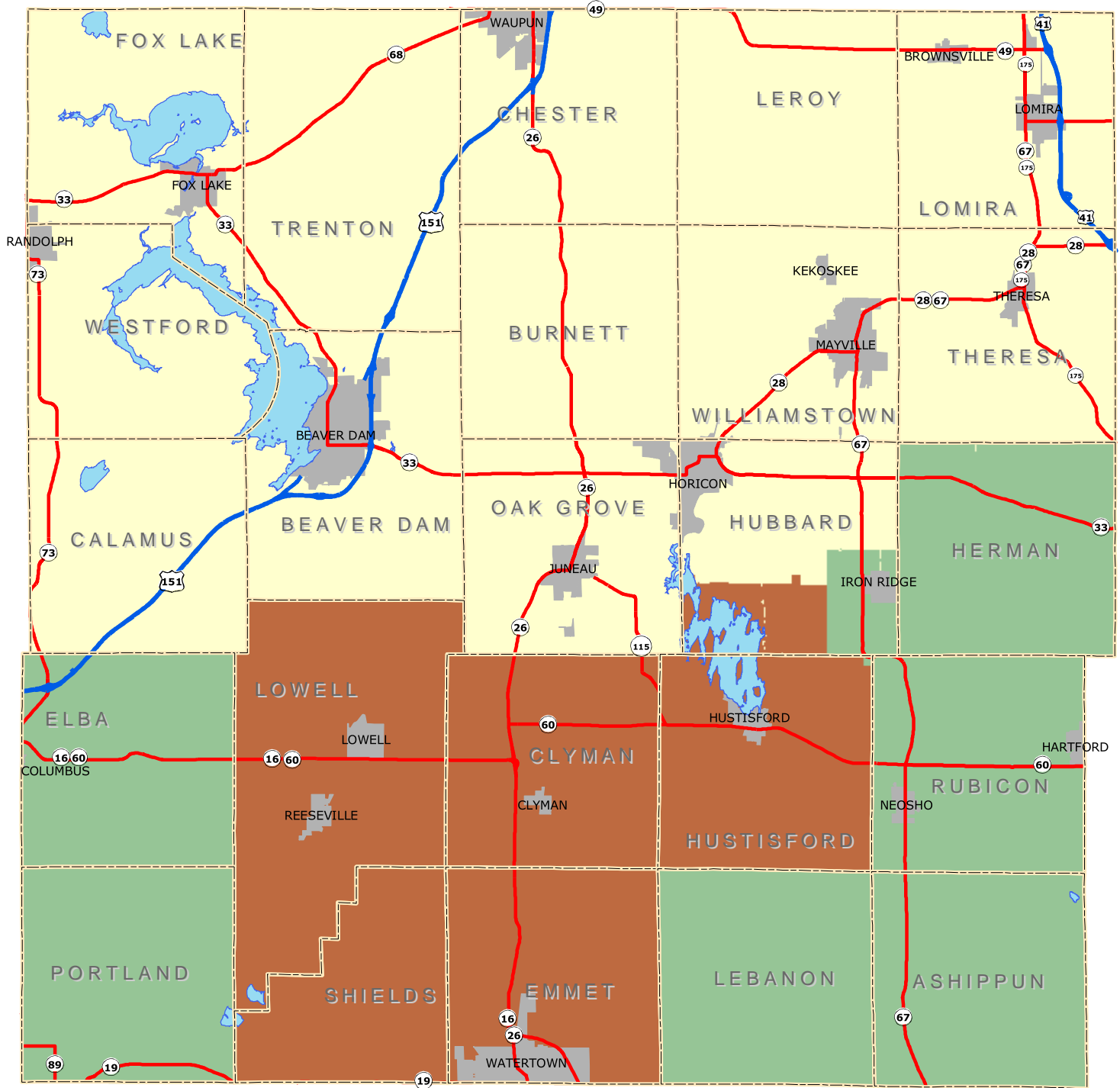


Dodge County
Planning and Development
Department



Source: Dodge County Planning and Development Department, April 2004
Derived from Wisconsin Department of Administration maps dated June 2002

Map 4-7, Natural Gas Service Providers Dodge County, Wisconsin



Legend

- U.S. Highway
- State Highway
- Town Boundaries
- Municipalities
- Lake
- Wisconsin Power and Electric Company
- Wisconsin Gas Company
- Alliant Energy



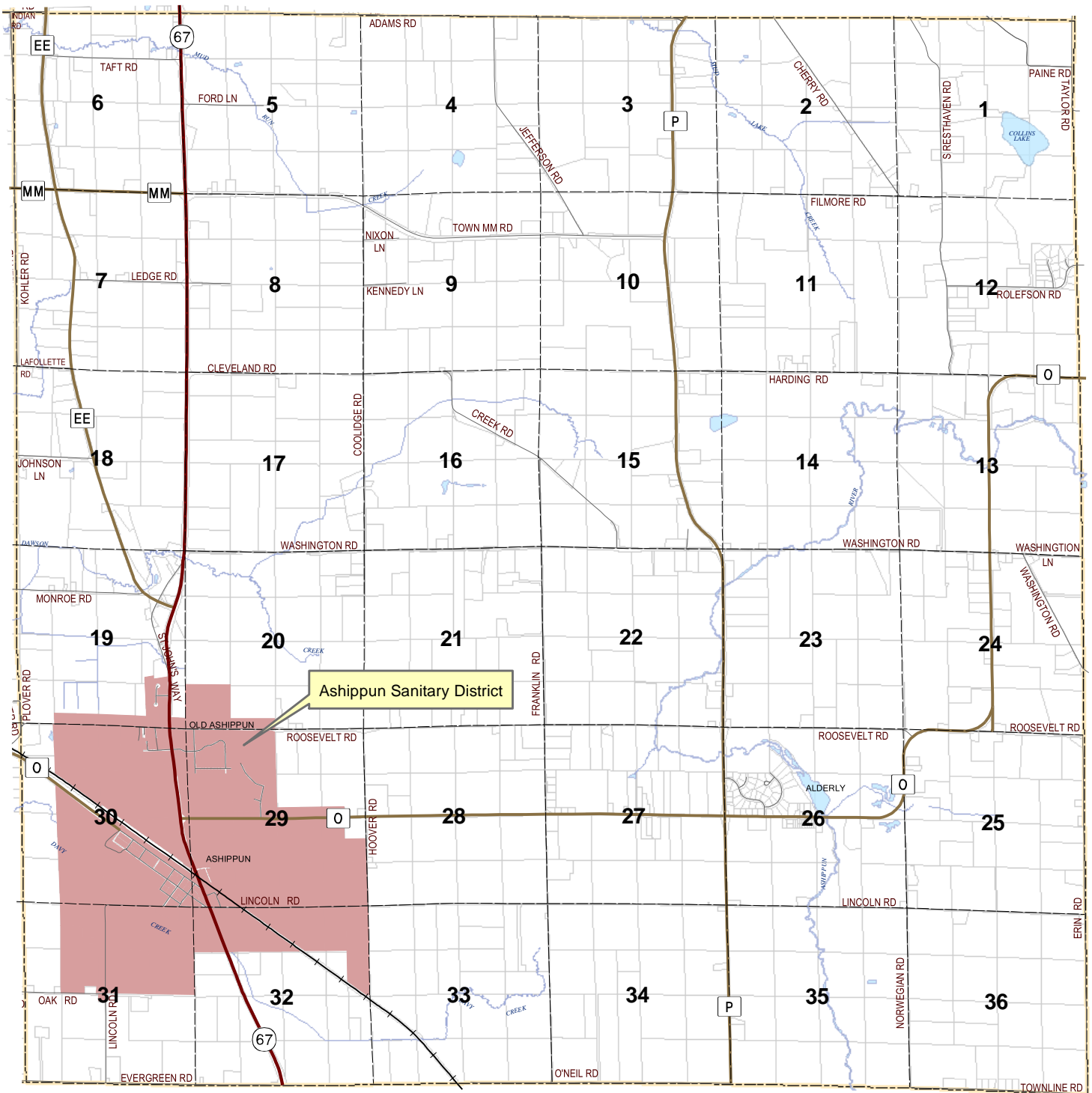
Dodge County
Planning and Development
Department



Source: Dodge County Planning and Development Department, April 2004
Derived from Wisconsin Department of Administration maps dated December 2002

0 2.5 5 10 Miles

Map 4-8 , Public Sewer and Water Facilities Town of Ashippun, Dodge County, Wisconsin



Legend

	U. S. Highway		Section Line
	State Highway		River or Stream
	County Highway		Waterbodies
	Town Road		Public Sewer and Water Service
	Railroad		Sanitary District
	Town Boundary		Municipality without Public Sewer and Water Service

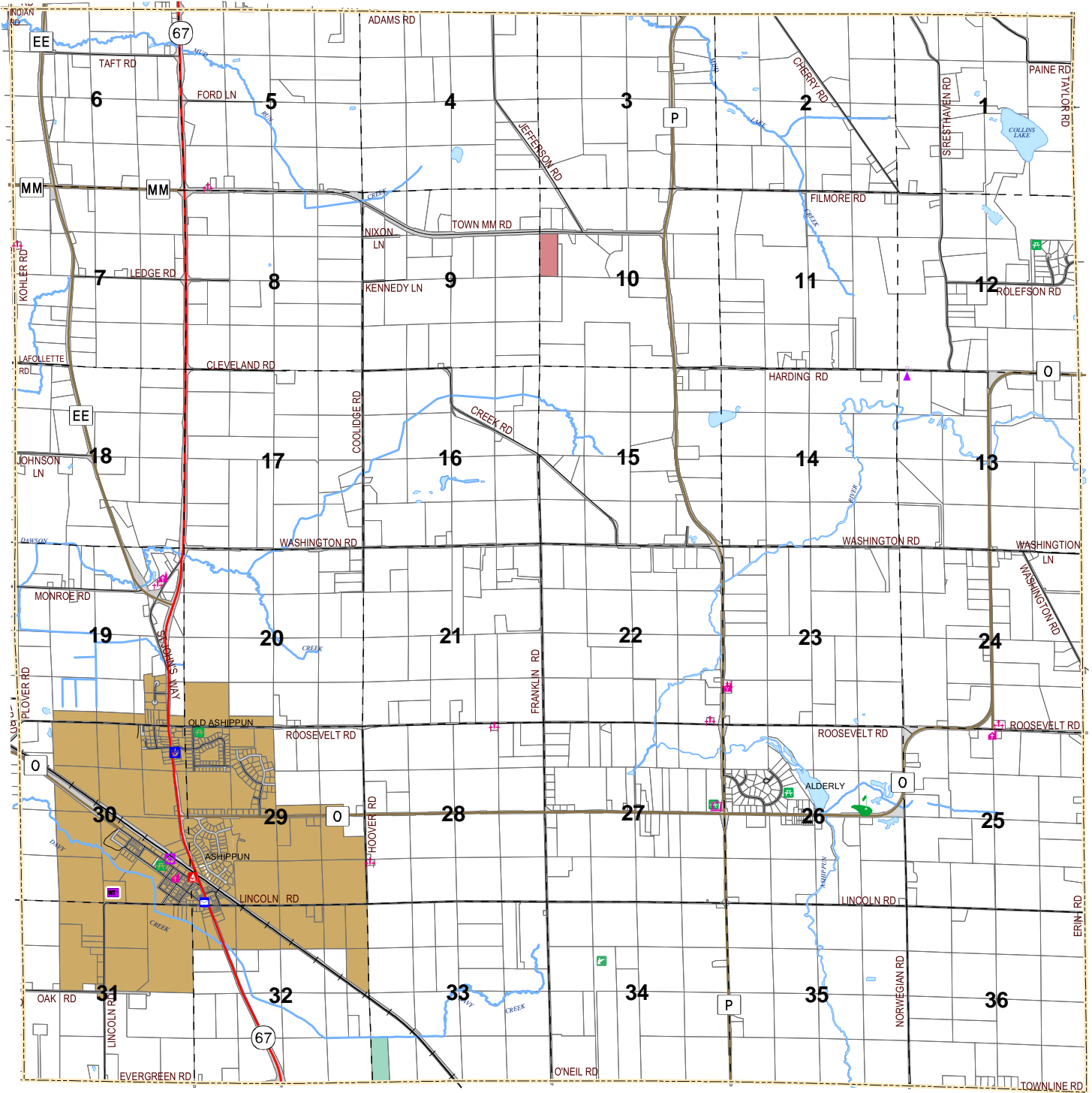
Dodge County
Planning and Development
Department

Dodge County Wisconsin

Town of Ashippun

Source: Dodge County Planning and Development Department, November 2004

Map 4-9, Utilities and Community Facilities Town of Ashippun, Dodge County, Wisconsin



Legend	
	U.S. Highway
	State Highway
	County Highway
	Town Road
	Waterbody
	Rivers and Streams
	Town Boundary
	Railroad
	Section Line
	Bike Trail
	Municipalities
	Cemetery
	Church
	Correctional Facility
	Municipal Hall
	School
	Day Care
	Nursing Home/Elderly Housing
	Hospital or Clinic
	Airport or Air Strip
	Library
	Post Office
	Fire Station
	Police Station
	Park Area
	County Park
	Park
	Boat Launch
	Golf Course
	Sportsman's Club
	Wildlife Site
	Wildlife Area
	Sanitary Service Area
	Waste Treatment Plant
	Recycling-Utility Area
	Recycling
	Town Dump (unused)
	Utility Station
	Communication Tower
	Water Tower
	Active Mine Area

Dodge County
Planning and Development
Department

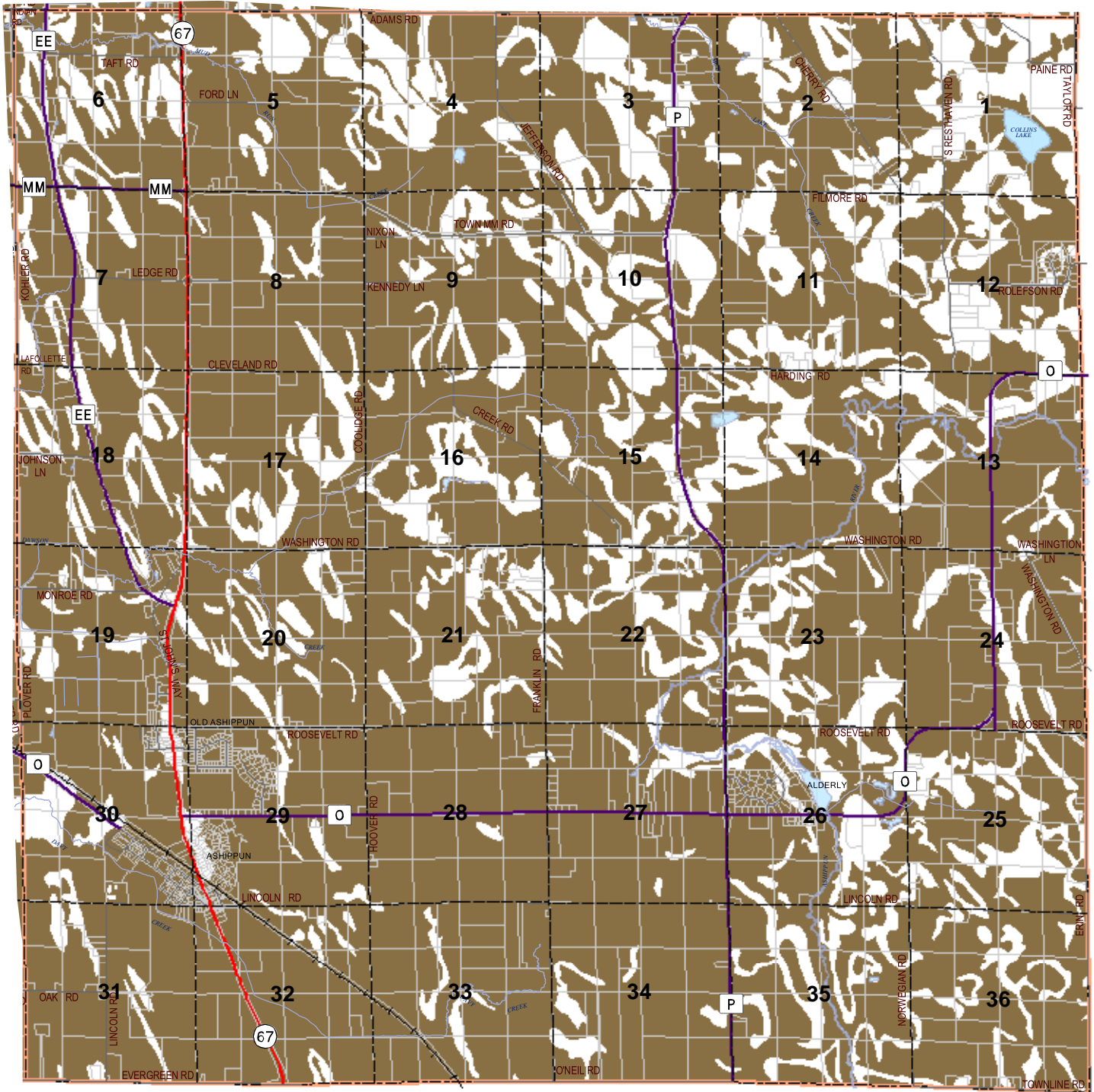
Dodge County Wisconsin

Town of Ashippun

0 0.4 0.8 1.6 Miles

Source: Dodge County Planning and Development Department, October 2004

Map 5-1, Prime Agricultural Soils Town of Ashippun, Dodge County, Wisconsin



Legend

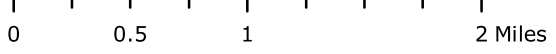
	U. S. Highway		Town Boundary
	State Highway		Section Line
	County Highway		River or Stream
	Town Road		Waterbodies
	Railroad		Prime Soils
			Municipalities

Dodge County Wisconsin

Dodge County Planning and Development Department

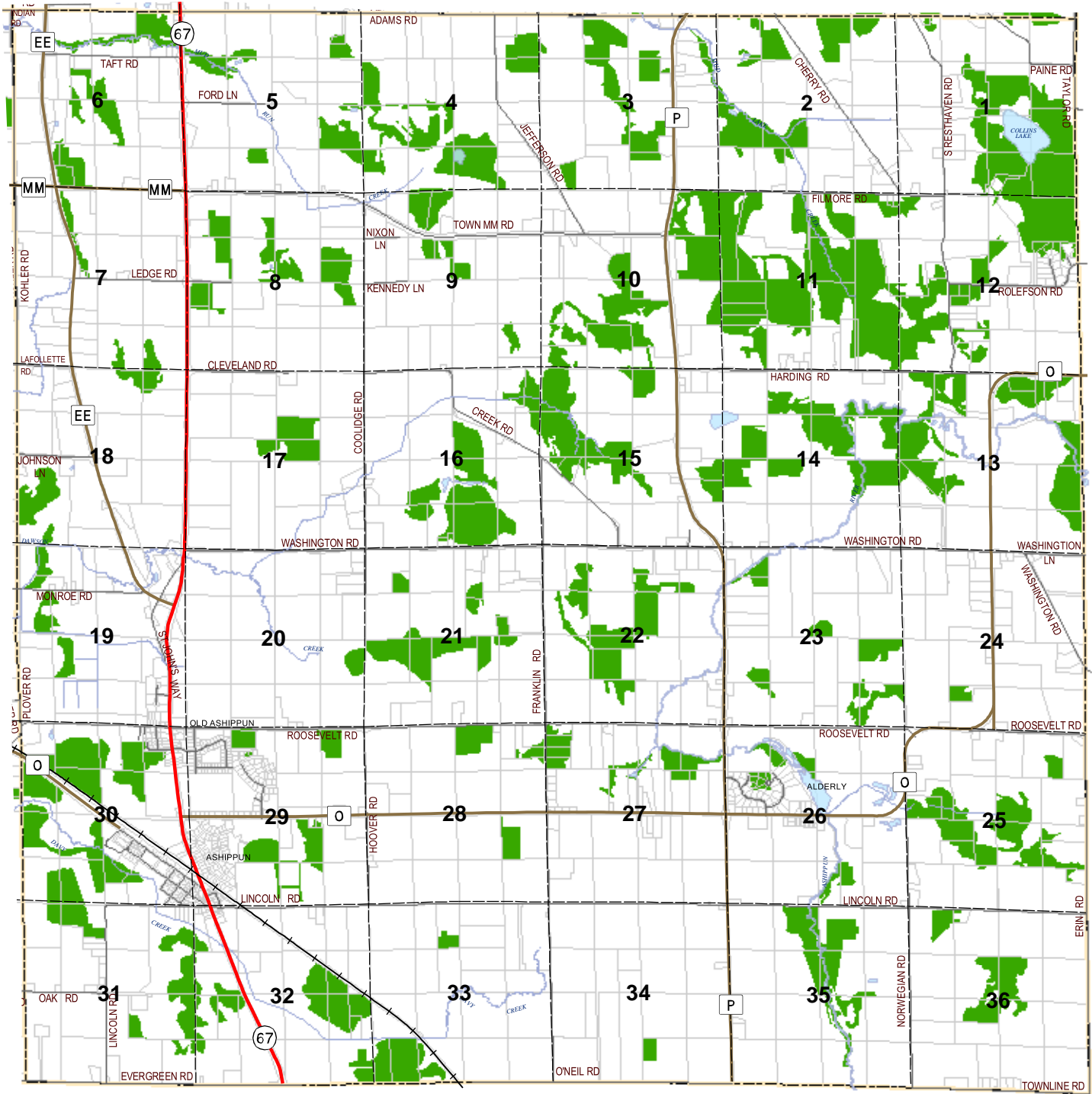
Town of Ashippun

Source: Dodge County Planning and Development Department, November 2004
 Derived from US Department of Agriculture, Soil Conservation Service files, August 1998



Map 5-2, Woodlots

Town of Ashippun, Dodge County, Wisconsin



Legend

	U. S. Highway		Town Boundary
	State Highway		Section Line
	County Highway		River or Stream
	Town Road		Waterbodies
	Railroad		Woodlots
			Municipalities

Dodge County
Planning and Development
Department

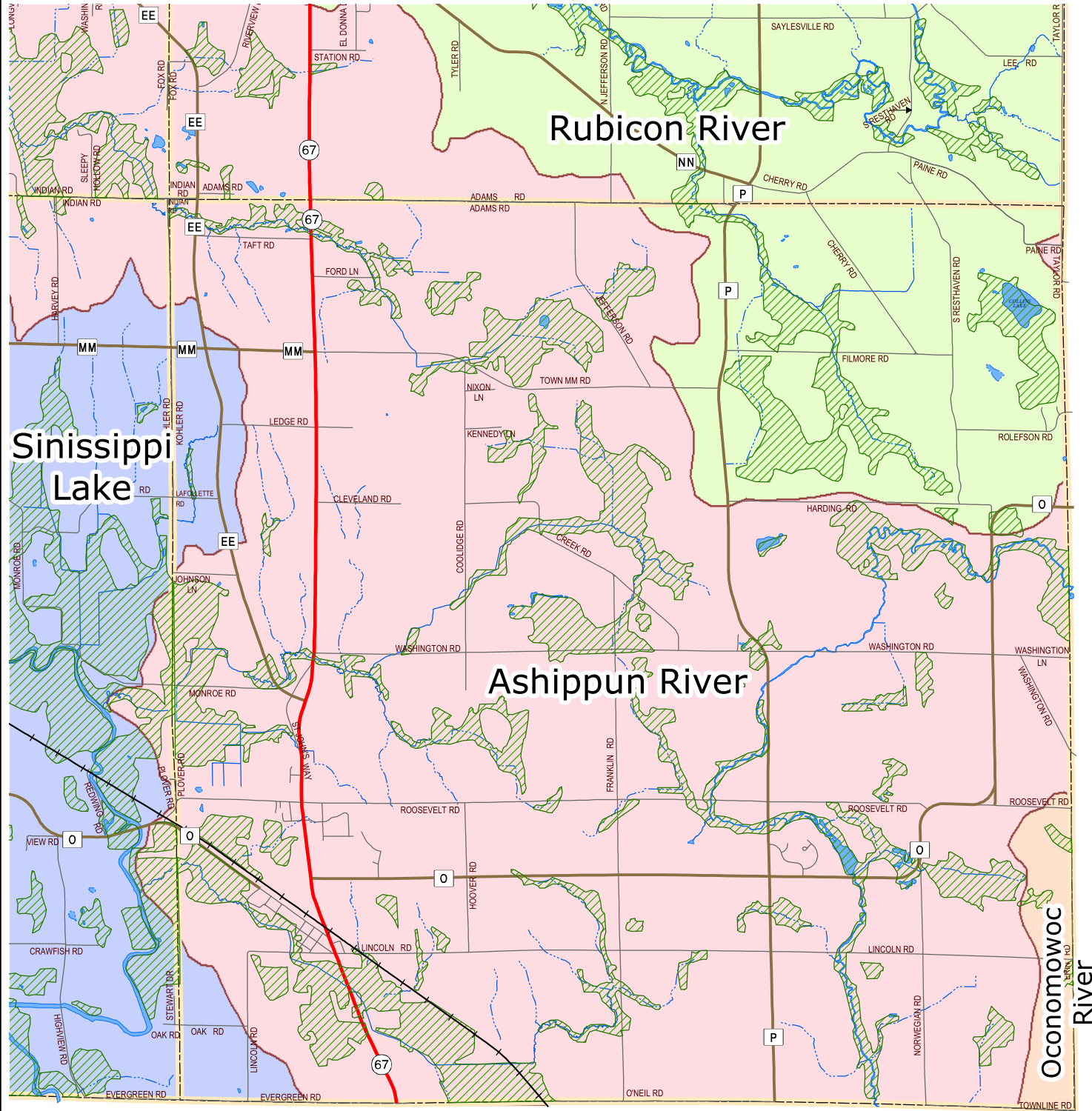
Dodge County Wisconsin

Town of Ashippun

Source: Dodge County Planning and Development Department, November 2004



Map 5-3, Wetlands, Watersheds, Streams and Surface Water Town of Ashippun, Dodge County, Wisconsin

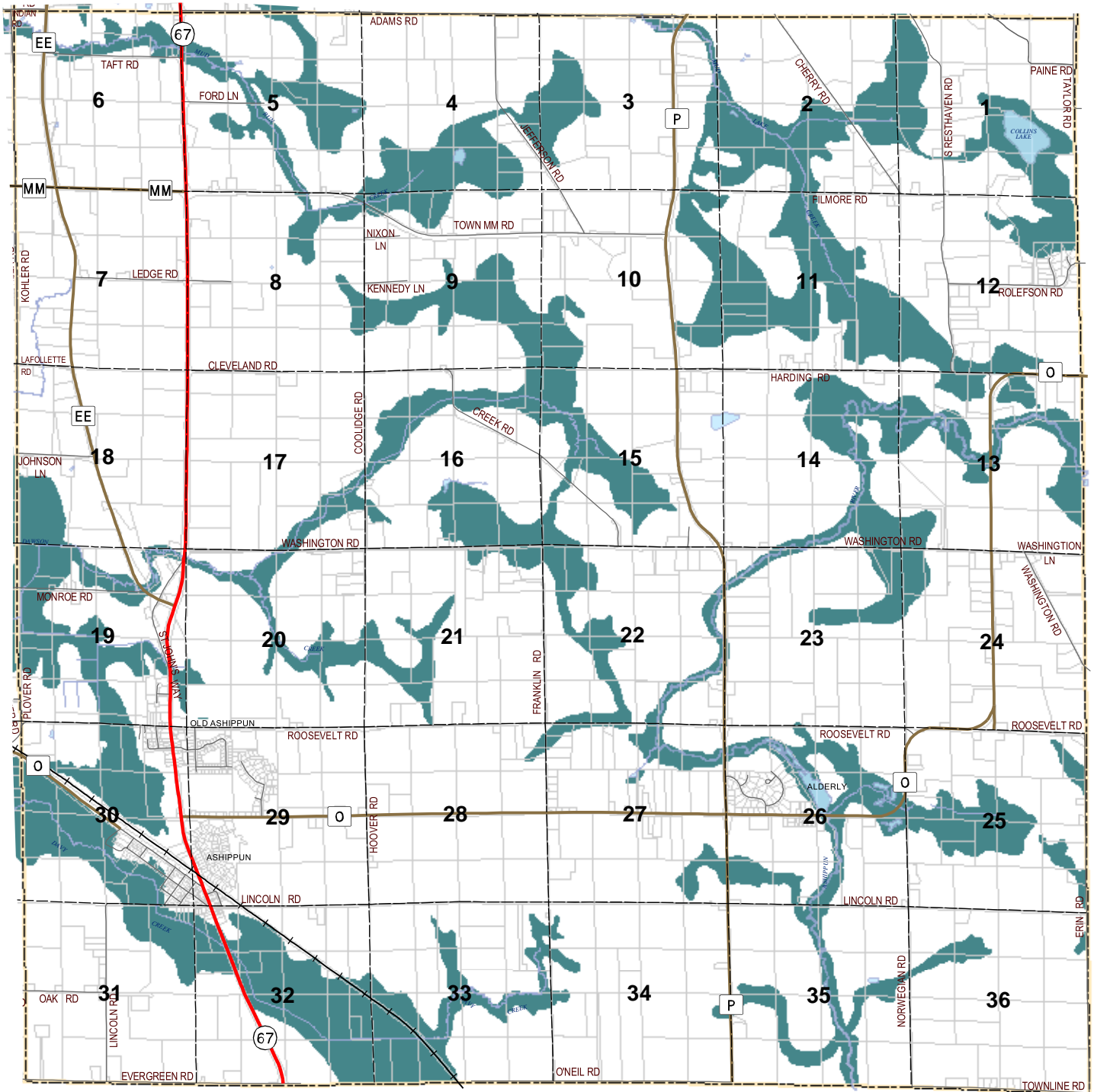


Legend		Watersheds	
	U.S. Highway		Ashippun River
	State Highway		Beaver Dam River
	County Highway		Calamus Creek
	Town Road		East Branch Rock River
	Railroad		East and West Branches Milwaukee River
	Town Boundary		Lower Crawfish River
	Wetlands		Lower Grand River
	Lakes and Ponds		Maunsha River
	Rivers and Streams		Middle Rock River
	Streams		Oconomowoc River
	Intermittent Streams		Rubicon River
	Horicon Marsh		Sinissippi Lake
	Municipalities		Upper Crawfish River
			Upper Rock River

Dodge County
Planning and Development
Department

Dodge County Wisconsin
Town of Ashippun

Map 5-4, Floodplains Town of Ashippun, Dodge County, Wisconsin



Legend

	U. S. Highway		Section Line
	State Highway		River or Stream
	County Highway		Waterbodies
	Town Road		Municipalities
	Railroad		Floodplains
	Town Boundary		

Dodge County
Planning and Development
Department

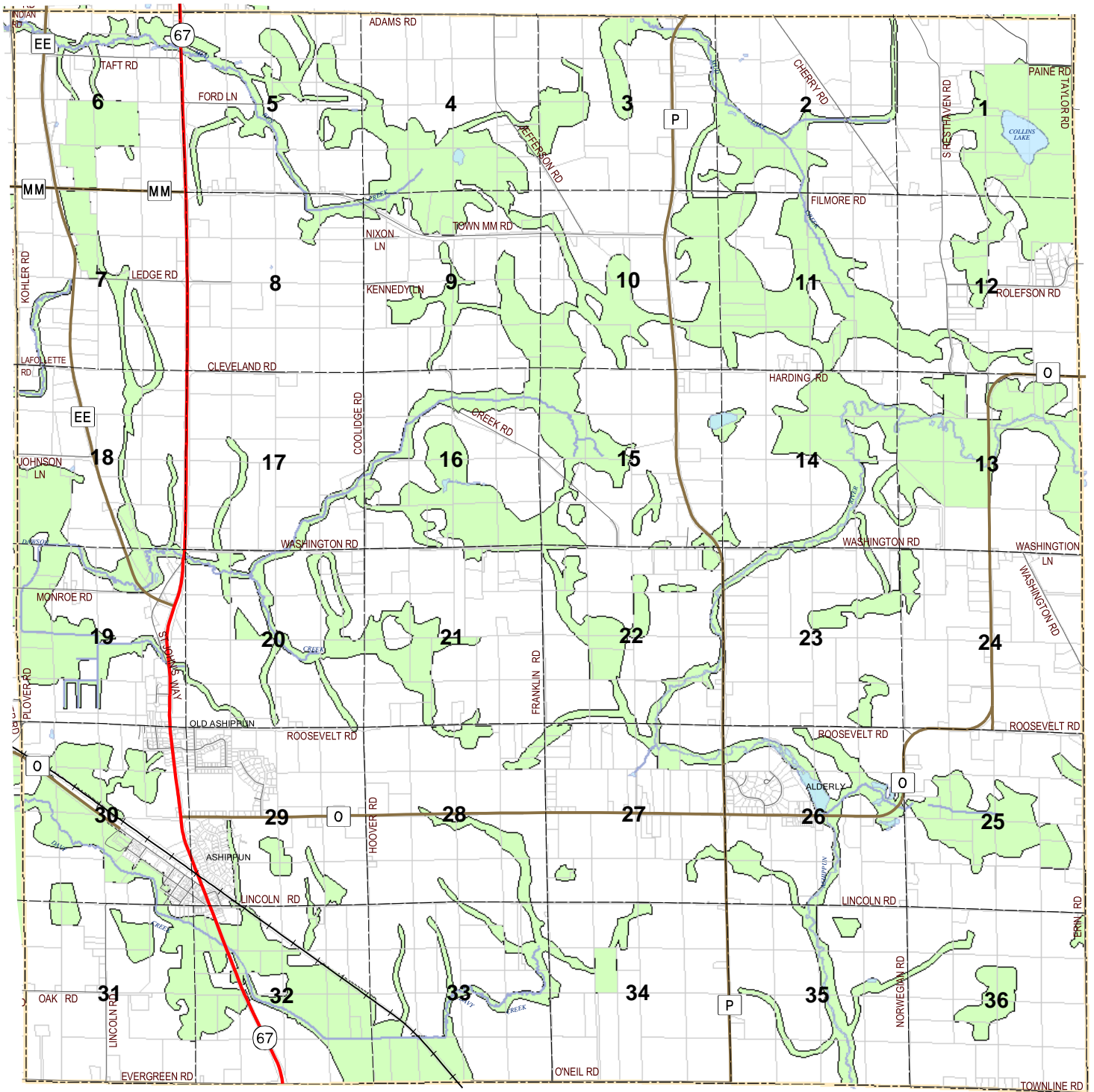
Dodge County Wisconsin

Town of Ashippun

Source: Dodge County Planning and Development Department, November 2004
Created from Flood Insurance Rate Map



Map 5-5, Environmental Corridors Town of Ashippun, Dodge County, Wisconsin

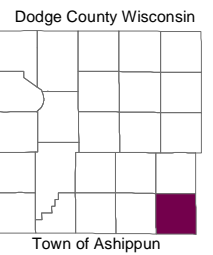


Legend

	U. S. Highway		Town Boundary
	State Highway		Section Line
	County Highway		River or Stream
	Town Road		Waterbodies
	Railroad		Environmental Corridors
			Municipalities



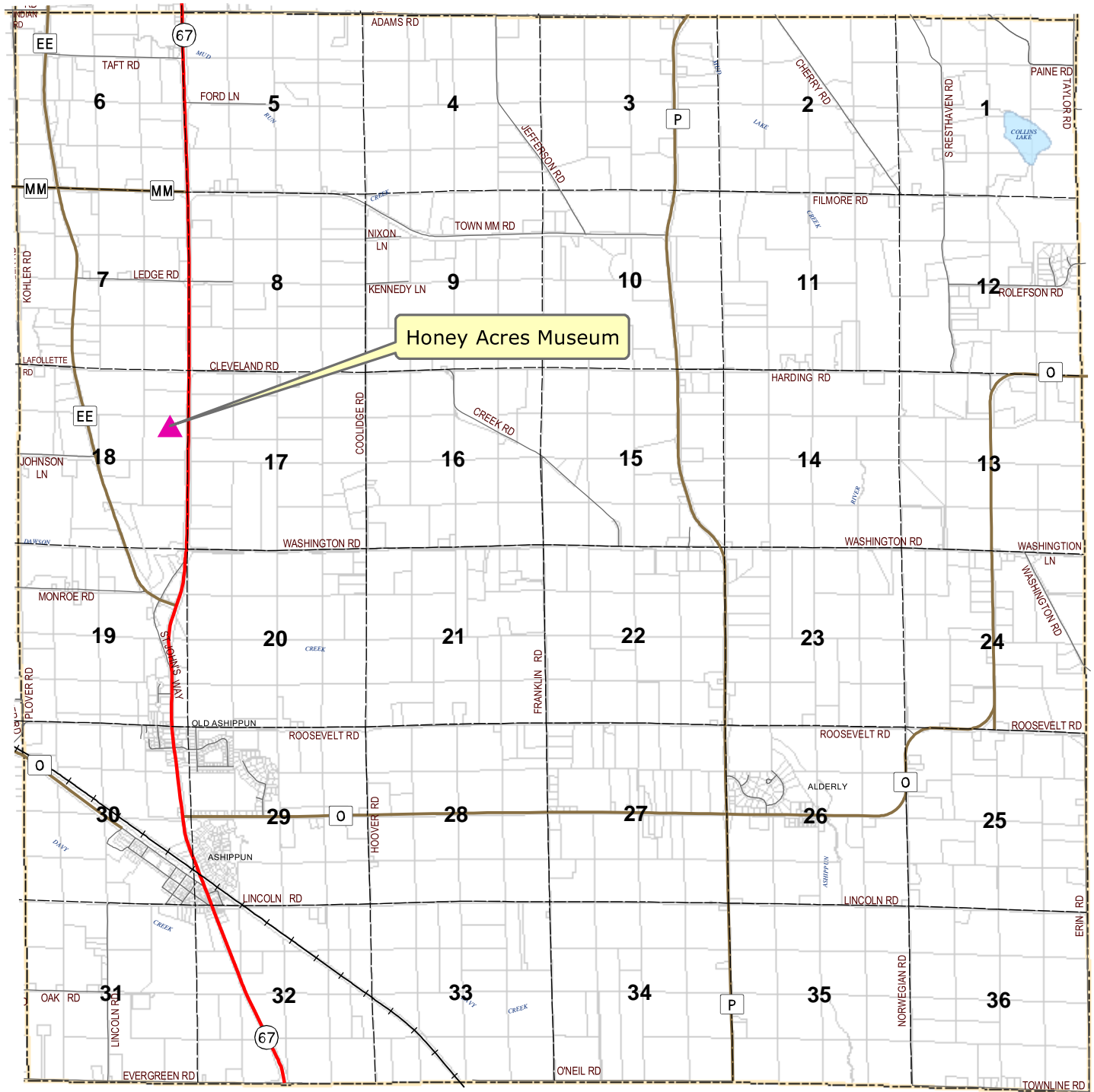
Dodge County
Planning and Development
Department



Source: Dodge County Planning and Development Department, November 2004



Map 5-6, Historical, Cultural, and Archaeological Resources Town of Ashippun, Dodge County, Wisconsin



Honey Acres Museum

Legend		Resource	
	U. S. Highway		Cultural Site
	State Highway		Museum
	County Highway		Museum - Historical Society
	Town Road		State or National Register Site
	Railroad		River or Stream
	Town Boundary		Waterbodies
	Section Line		Municipalities
	Tax Parcel Boundary		Burials are not shown due to protection

Dodge County
Planning and Development
Department

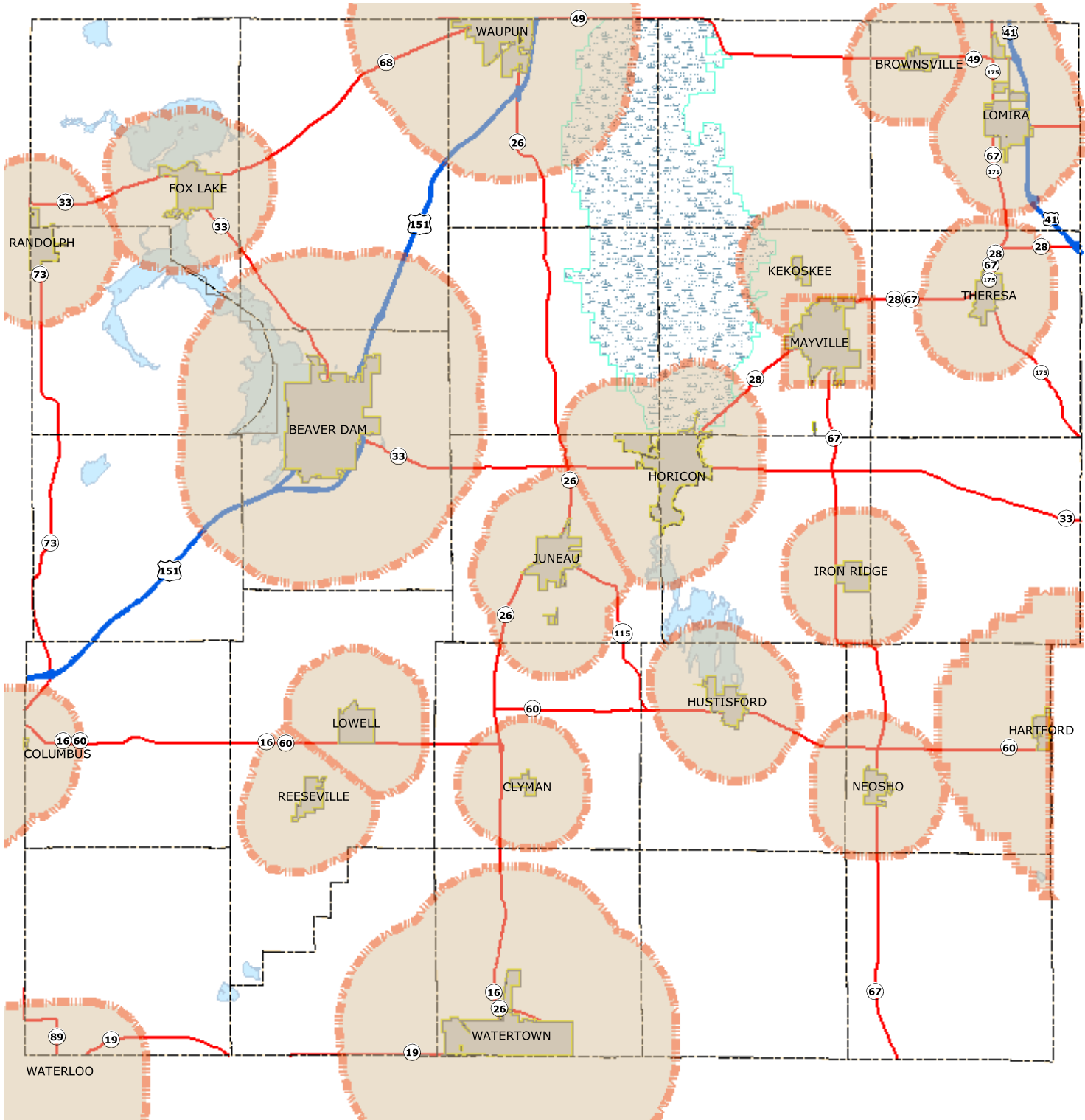
Dodge County Wisconsin

Town of Ashippun

Source: Dodge County Planning and Development Department, November 2004



Map 7-1, Extraterritorial Jurisdiction Dodge County, Wisconsin



Legend

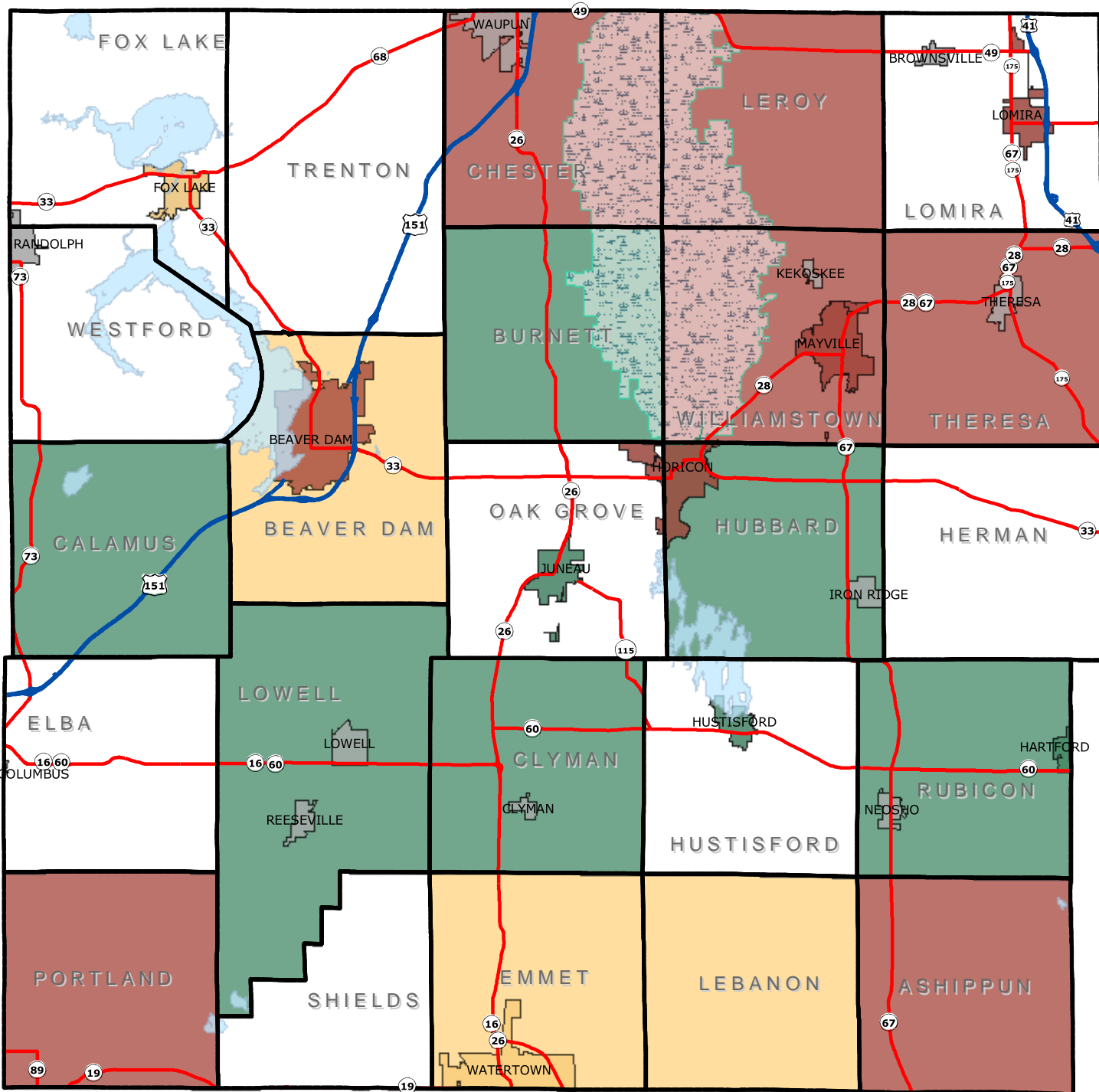
- U.S. Highway
- State Highway
- Town Boundaries
- Municipalities
- Extraterritorial Jurisdiction Boundary
- Horicon Marsh
- Lake



Dodge County
Planning and Development
Department



Map 7-2, Status of Planning Dodge County, Wisconsin



Legend

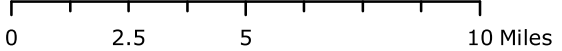
- Land Use Plans
- Comprehensive Plans (Not Smart Growth)
- Smart Growth Comprehensive Plans
- No plans
- Municipalities (No plans)
- U.S. Highway
- State Highway
- Huron Marsh
- Lake



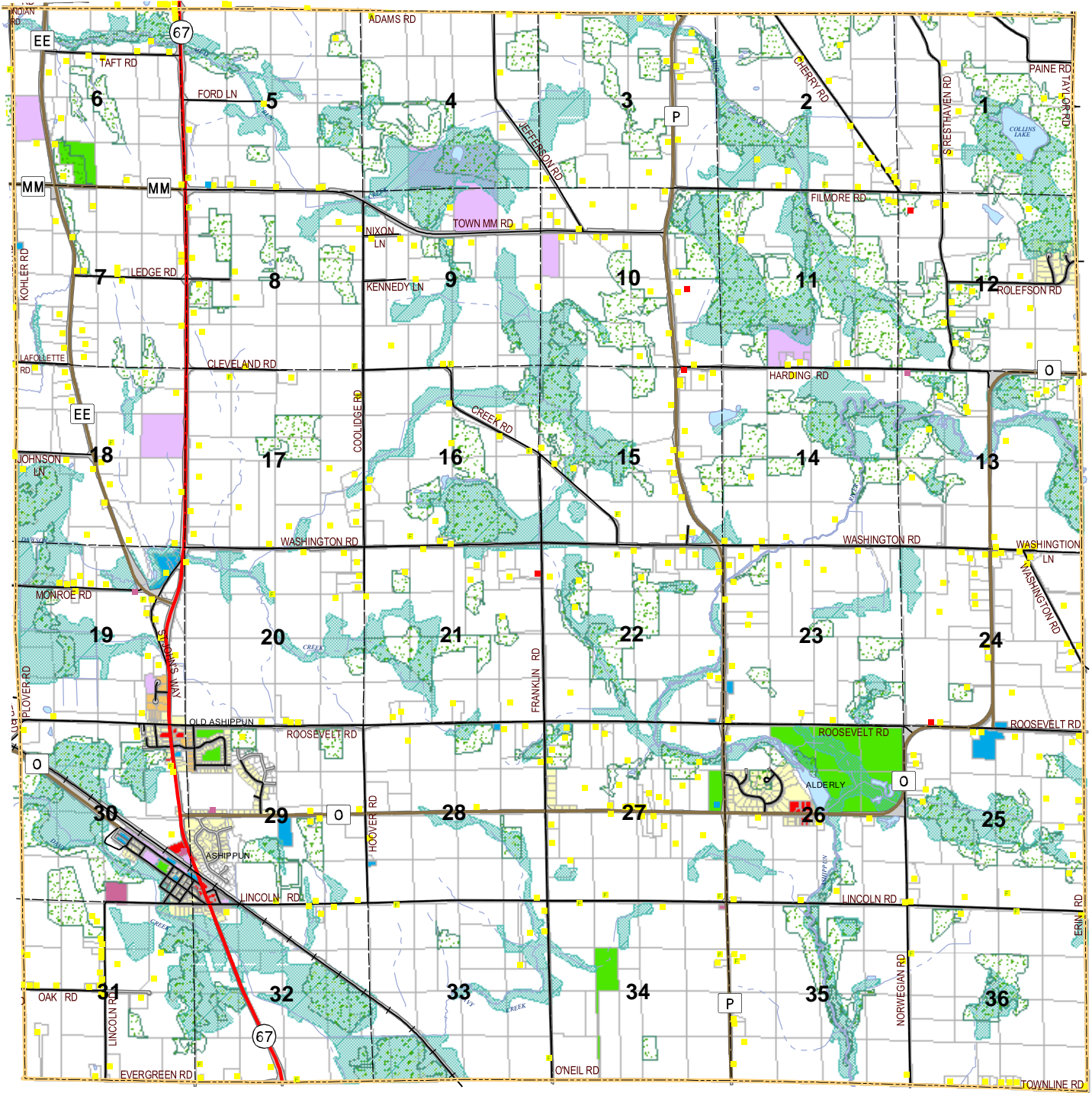
Dodge County
Planning and Development
Department



Source: Dodge County Planning and Development Department, April 2004



Map 8-1, Existing Land Use Town of Ashippun, Dodge County, Wisconsin



Legend

U.S. Highway	Section Line	Single Family Residential	Public & Quasi-Public
State Highway	Tax Parcel Boundary	Farmstead	Transportation
County Highway	Municipalities	Two Family Residential	Parks & Recreation
Town Road	Waterbody	Multi-Family Residential	Agriculture-Other Resource
Railroad	Rivers and Streams	Mobile Home Park	Communication & Utilities
Town Boundary	Intermittent Stream	Commercial	Wetland overlay
		Industrial	Woodland overlay

Dodge County Wisconsin

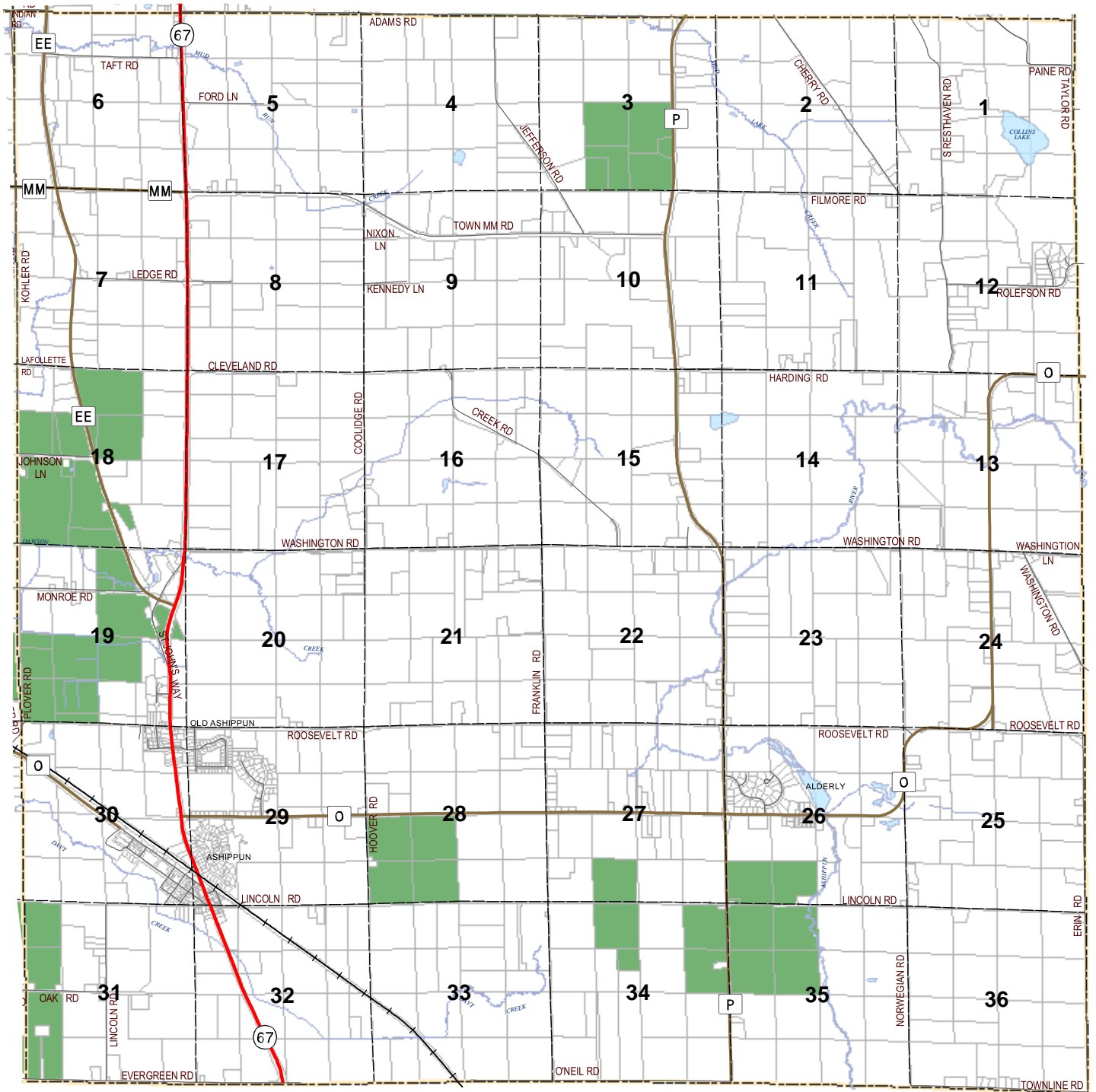
Dodge County Planning and Development Department

Town of Ashippun

Source: Dodge County Planning and Development Department, April 2004

0 0.5 1 2 Miles

Map 8-2, Farmland Preservation Participants Town of Ashippun, Dodge County, Wisconsin



Legend

	U. S. Highway		Farmland Preservation Participants
	State Highway		Tax Parcel Boundary
	County Highway		Section Line
	Town Road		River or Stream
	Railroad		Waterbodies
	Town Boundary		Municipalities

Dodge County Wisconsin

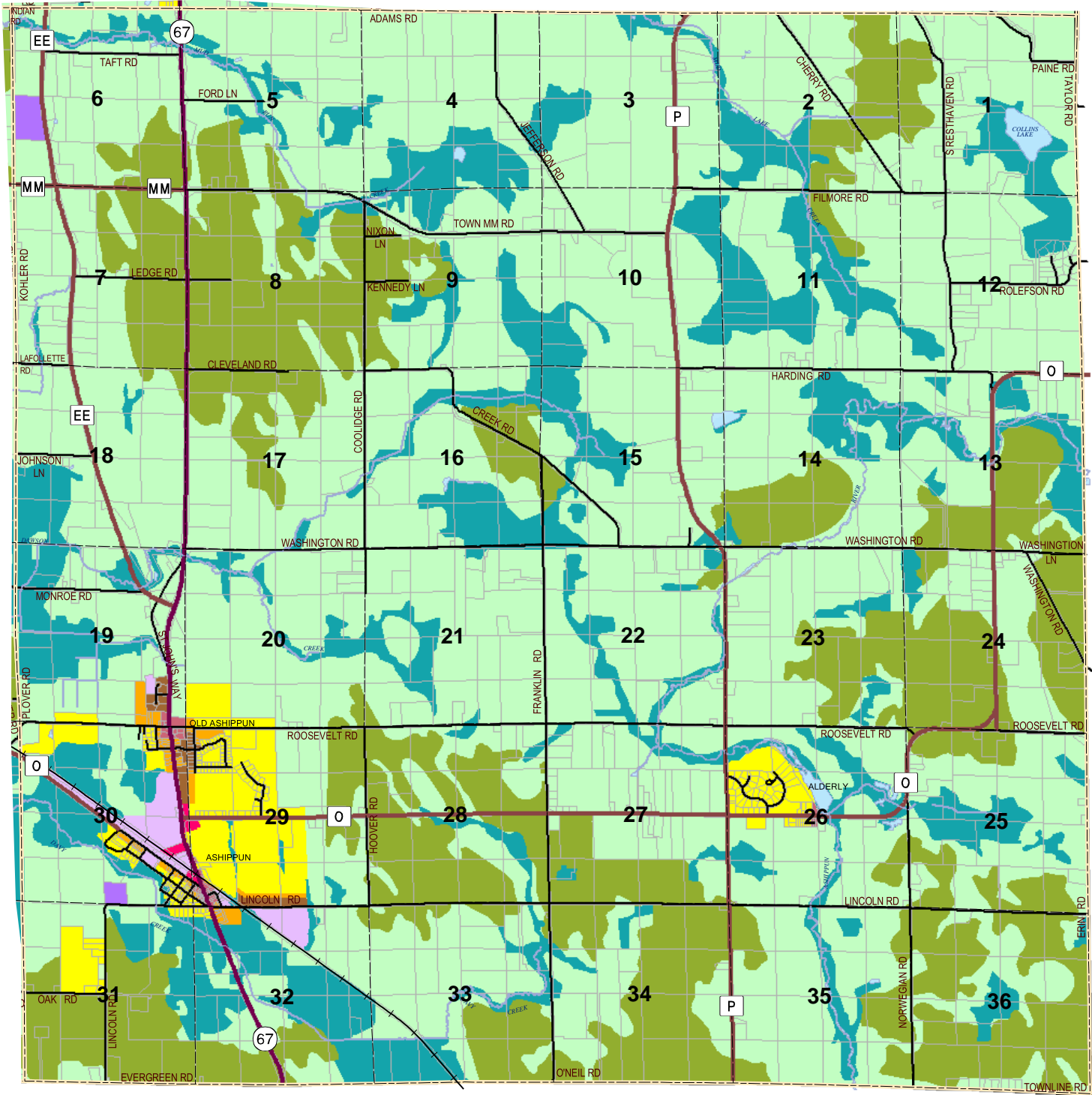
Dodge County Planning and Development Department

Town of Ashippun

0 0.5 1 2 Miles

Source: Dodge County Planning and Development Department, November 2004

Map 9-1, Existing Zoning Town of Ashippun, Dodge County, Wisconsin



Legend			
	U. S. Highway		Waterbody
	State Highway		Prime Agricultural
	County Highway		General Agricultural
	Town Road		Light Industrial
	Railroad		Industrial
	Town Boundary		Single Family Residential
	Section Line		General Commercial
	Tax Parcel Boundary		Two Family Residential
			Multi-Family Residential
			City or Village

Dodge County
Planning and Development
Department

Dodge County Wisconsin

Town of Ashippun

0 0.5 1 2 Miles

Source: Dodge County Planning and Development Department, April 2004